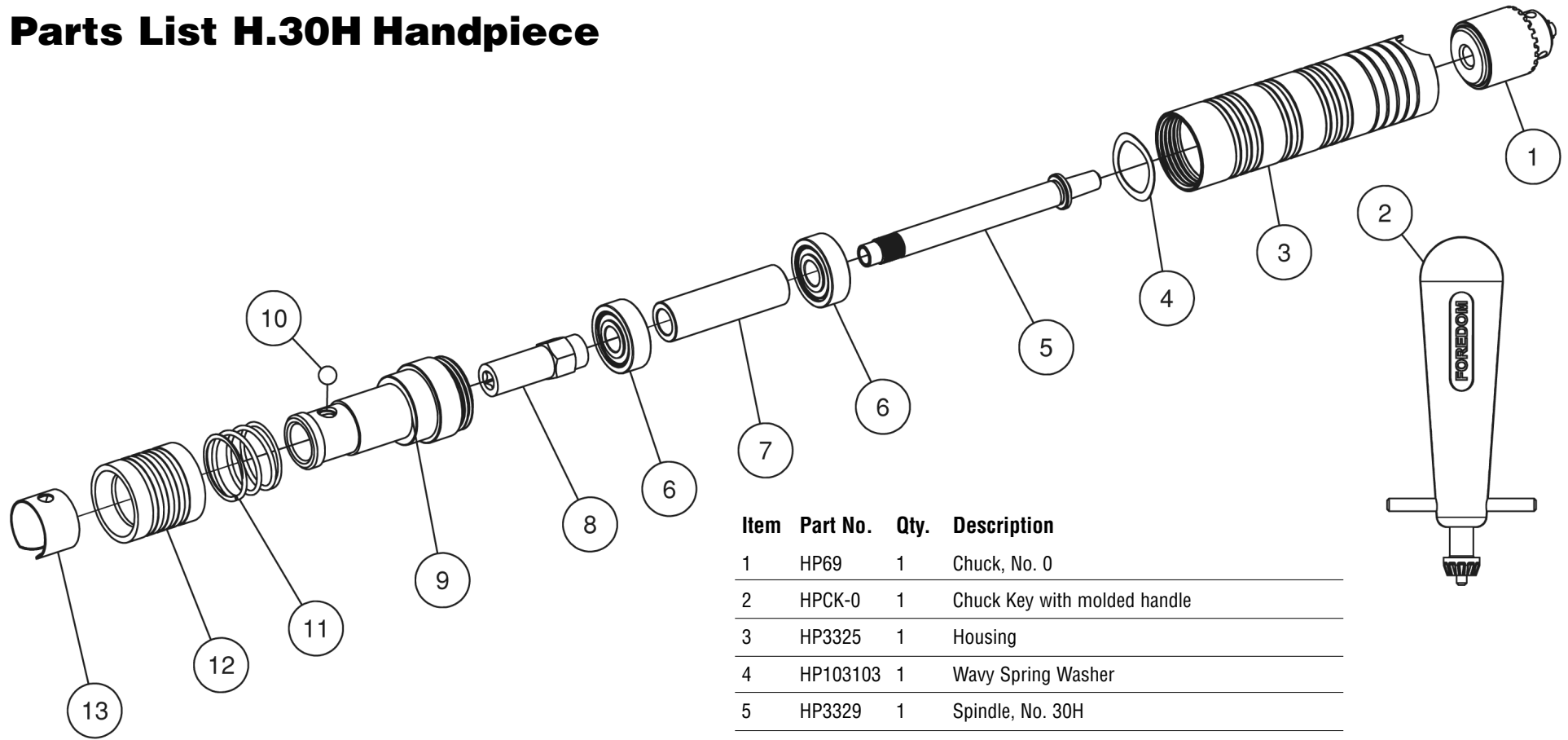


Parts List H.30H Handpiece



| Item | Part No. | Qty. | Description |
|------|----------|------|------------------------------|
| 1 | HP69 | 1 | Chuck, No. 0 |
| 2 | HPCK-0 | 1 | Chuck Key with molded handle |
| 3 | HP3325 | 1 | Housing |
| 4 | HP103103 | 1 | Wavy Spring Washer |
| 5 | HP3329 | 1 | Spindle, No. 30H |
| 6 | HP61 | 2 | Ball Bearing |
| 7 | HP3428 | 1 | Bearing Spacer |
| 8 | HP10813 | 1 | Square Drive Insert |
| 9 | HP3454 | 1 | QD Connector |
| 10 | HP48 | 1 | Catch Ball |
| 11 | HP10816 | 1 | Locking Spring |
| 12 | HP10817 | 1 | Ball Lock Sleeve |
| 13 | HP43 | 1 | Catch spring |

FOREDOM®

The Foredom Electric Company, Bethel, CT 06801

203-792-8622 • Fax: 203-796-7861

www.foredom.net

Email: customerservice@blackstoneind.com