

# FOREDOM®

## Owner's Manual

# MAWS10 Mobile Work Station



### Safety Instructions

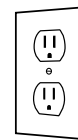
**Before setting up and using your Fore-  
dom® Mobile Work Station, please read  
all safety instructions.** They are for your  
protection and should always be followed  
to reduce the risk of personal injury or  
damage to the tools and equipment.

- **Always** wear proper eye and face protection whenever you operate a Fore-  
dom or any power tool to prevent serious eye  
or face injuries.
- **Always use a proper dust collection  
system or wear a respirator** to prevent  
the inhalation of dust particles, polishing  
compounds, or other debris into the lungs.
- **Do not wear loose fitting clothing  
or jewelry.** Loose clothing or jewelry  
can become entangled in the rotating  
accessory. Do not wear items such as  
neckties, necklaces, or bracelets when  
operating power tools. Be sure to **tie  
back or secure long hair.**
- **Never** wear open shoes or sandals.  
Use footwear that is tough enough to  
protect your feet from falling tools.
- **If using a flexible shaft machine,  
secure it properly to the motor yoke on  
middle shelf.**
- **Never operate the motor with the outer  
sheath removed from the flexible shaft.**
- **Always disconnect** the power cord  
before servicing the motor or removing  
the flexible shaft or sheath.
- **Never** operate your power tool during  
a perceptible power decrease. Turn  
power tool off and do not use until  
power is fully restored.
- **Use proper grounding procedures.**  
This tool should be grounded while  
in use to protect the operator from  
electric shock. The tool is equipped  
with an approved 3-conductor cord and  
a 3-prong grounding type plug to fit  
the proper grounding receptacle. The  
green (or green and yellow) conductor  
in the cord is the grounding wire. Never  
connect the green (or green and yellow)  
wire to a live terminal. If your unit is  
for use on less than 150 volts, it has a  
plug that looks like sketch A below. An  
adapter (sketches B and C) can be used  
for connecting plugs as shown in sketch  
A to 2-prong receptacles. The green  
colored rigid ear, lug, etc., extending  
from the adapter must be connected to  
a permanent ground such as a properly  
grounded outlet box. **Some jurisdic-  
tions, including Canada, prohibit the  
use of 3 to 2 prong adapters. Where  
prohibited, they should not be used.**  
Use only 3-wire extension cords that  
have 3-prong grounding type plugs and  
3-pole type plugs and 3-pole recepta-  
cles that accept the tool's plug. Always  
disconnect the power cord before  
servicing the tool. Never use in an area  
where flammable vapors are present.
- **The Top Platform of the Mobile Work  
Station has a 50-lb Maximum Limit.  
Never overload the Top Platform.**
- **Always engage the kickstand** for  
maximum stability before using or  
plugging in the work station.
- **Be Careful of cords on the floor.**  
For your own safety and that of the  
equipment on the work station, it is  
**Extremely Important** to be mindful of  
all the power cords and to avoid getting  
entangled and/or tripping over them.

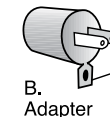
**Replace or repair worn cord immediately.**



Grounding  
Blade



A.  
Cover of  
Grounded  
Outlet Box



B.  
Adapter

Grounding  
Means



C.  
Cover of  
2-prong  
Outlet Box  
with Adapter

**Freedom Electric Company**

Bethel, CT 06801 USA

**www.freedom.net**

**MAWS10 Mobile Work Station Includes:**

Middle shelf with flexible shaft motor yoke mount  
Power Cord, 6 ft.

Velcro® cable Ties and Split Hose for Cord Management

**Assembly**

A Phillips-head screwdriver is all that is needed. If mounting a flexible shaft machine, a flat head screwdriver is also needed.

**1.** Remove the unit and the components from the box with care.

**2.** If you do not plan to mount a flexible shaft motor, remove and store the yoke mount.

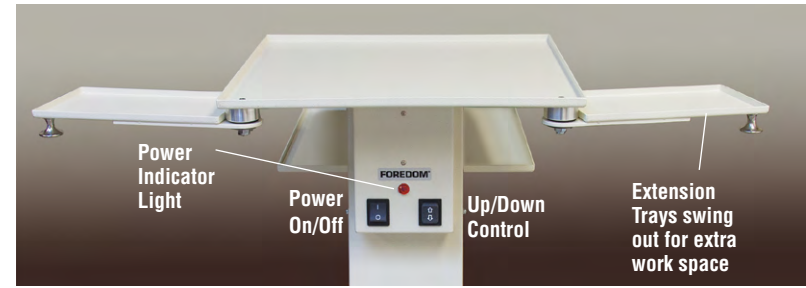
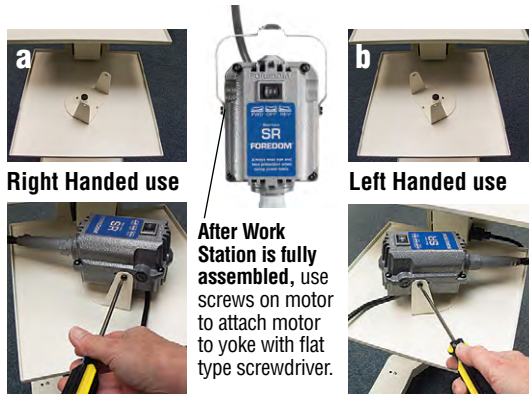
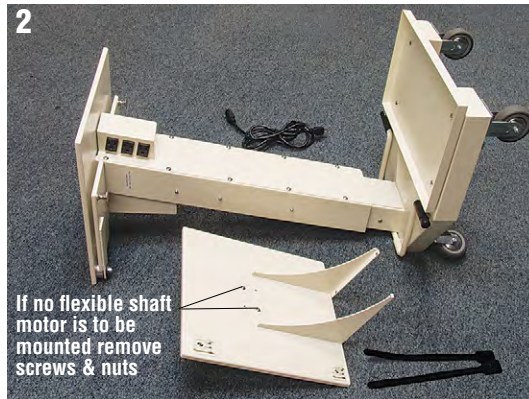
**a.** If a flexible shaft motor is to be mounted in the yoke, **it comes set up for right handed use.** If this is your choice, proceed to step 3.

**b.** If the motor needs to be set up **for left handed use,** unscrew the yoke mount and remount it in the opposite direction, changing the screws and nuts on the shelf.

**3. To mount the shelf:**

lay the work station on its front-side, with ForeDOM label and indicator light facing the floor. Remove the four screws and carefully place the middle shelf on the back-side of the upright post, lining up the mounting holes of the shelf and the upright post. Insert and tighten the screws.

Stand the unit upright.



**Operation**

Be sure the Power On/Off switch is in the "Off" position before you connect the power cord from the outlet located on the left side of the upright post to a power outlet. The power indicator light will light up when the unit is on.

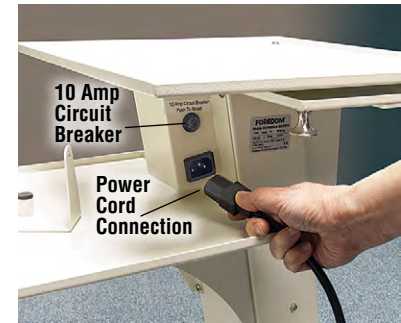
- **The Top Platform of the Mobile Work Station has a 50-lb Maximum Limit. Never overload the Top Platform.**
- **Always engage the kickstand** for maximum stability before using or plugging in the work station.

**To Raise or Lower the Top Platform:**

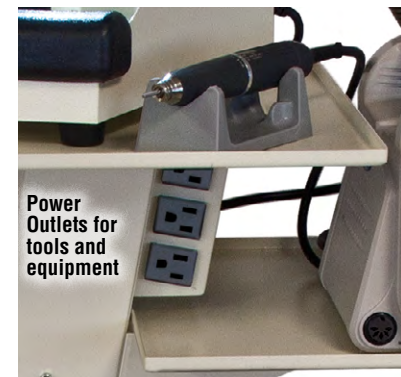
Engage the kickstand. Connect the power cord to a power outlet. Turn the power switch to On. Press the Up/Down control until the desired height is reached.

**To Move the Mobile Work Station:**

- 1.** Lower the top platform all the way down when you are moving the mobile work station. This keeps the center of gravity lower and provides extra stability. Swing the Extension Trays underneath the top platform when moving the work station.
- 2.** Disconnect the power from the power outlet.
- 3.** Disengage the kickstand.
- 4. Be Careful of cords on the floor.** For your own safety and that of the equipment on the Work Station, it is **Extremely Important** to be mindful of all the power cords and to avoid getting entangled and/or tripping over them. Use the supplied Split Hose and Velcro® Cable Ties to secure the power cords on your equipment.

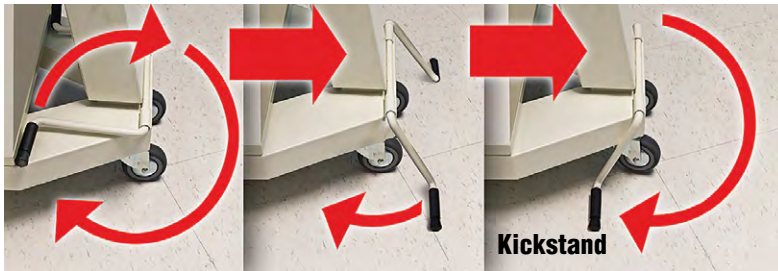


**If the unit is plugged in and it is not working, reset by pressing the 10 Amp Circuit Breaker button under the Top Platform.**



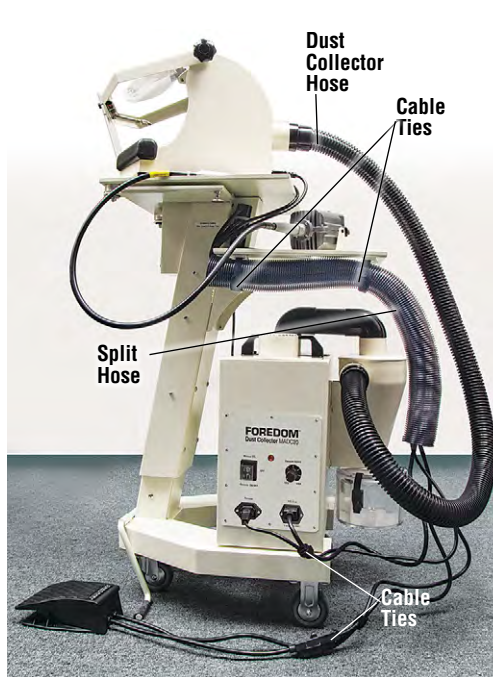


## Use Kickstand for Stability!



Stand the unit upright. Swing the kickstand down to the floor and step on it while pulling the work station forward. This will pivot the kickstand under the front wheels for added stability.

**Always use the Kickstand to prevent movement or tipping over. Pivot it back up and out of the way when the unit is being moved.**



### Cord Management

The Mobile Work Station includes 4 Velcro® Cable Ties and a 2-ft. long Split Hose to keep the cords out of the way. Your work set up may vary. The photos here are an example of cord management.

- When your equipment is placed on the Work Station, detach the Split Hose from the middle shelf.
- Slide each cord inside the Split Hose one at a time.
- Use the Velcro® Cable Ties to attach the Split Hose to plastic brackets on the underside of the middle shelf.



### Mounting MADC20 Dust Collector

If you will be using the ForeDOM MADC20 Dust Collector, the lower platform tray **must** be removed to place it on the lower platform.

- Remove the screws from the lower platform tray and keep them in the threaded holes for possible future use. Set tray aside.
- Pull the wheels off the mounting posts of the MADC20 Dust Collector.
- Align the mounting posts of the dust collector and insert into the four holes on the lower platform.



**MADC20 Dust Collector in place**



### LIMITED WARRANTY

Warranty period is 2 years for the MAWS10 Mobile Work Station.

Blackstone Industries, LLC d/b/a ForeDOM Electric Company warrants, to the original purchaser only, that its products will be free from defects in material or workmanship for the applicable period of time indicated above following the purchase date. During the warranty period, the defective product will be repaired or replaced without charge or, at our sole option, the purchase price will be refunded. This warranty does not cover damage caused in transit or by accident, misuse or ordinary wear.

ALL IMPLIED WARRANTIES INCLUDING, WITHOUT LIMITATION, IMPLIED WARRANTIES OF FITNESS FOR A PARTICULAR PURPOSE AND MERCHANTABILITY, ARE LIMITED IN DURATION TO THE APPLICABLE WARRANTY PERIOD. IN NO EVENT WILL WE BE LIABLE FOR ANY INCIDENTAL OR CONSEQUENTIAL DAMAGES. Some states do not allow limitations on how long an implied warranty lasts or the exclusion or limitation of incidental or consequential damages, so the above limitations or exclusion may not apply to you.

At our sole option, repair, replacement or refund will be made if the product is returned postage prepaid to:

**ForeDOM Electric Company, 16 Stony Hill Road, Bethel, Connecticut 06801**

All warranty repairs must be done at our factory at the above address. We will not pay any shipping or transportation charges.

This warranty gives you specific legal rights, and you may also have other rights which vary from state to state.

## FOREDOM®

**ForeDOM Electric Company**

16 Stony Hill Road, Bethel, CT 06801

Tel.: (203) 792-8622 • Fax: (203) 796-7861

Email: [customerservice@blackstoneind.com](mailto:customerservice@blackstoneind.com)

[www.foredom.net](http://www.foredom.net)

**Please retain your proof of purchase for warranty repairs.**