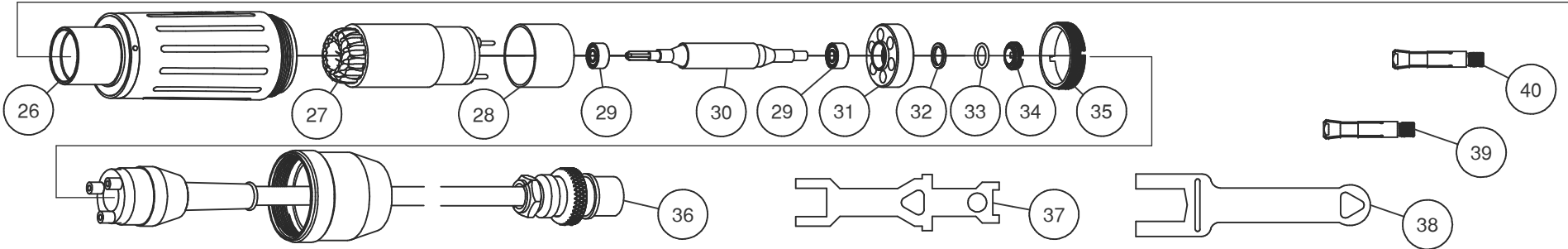
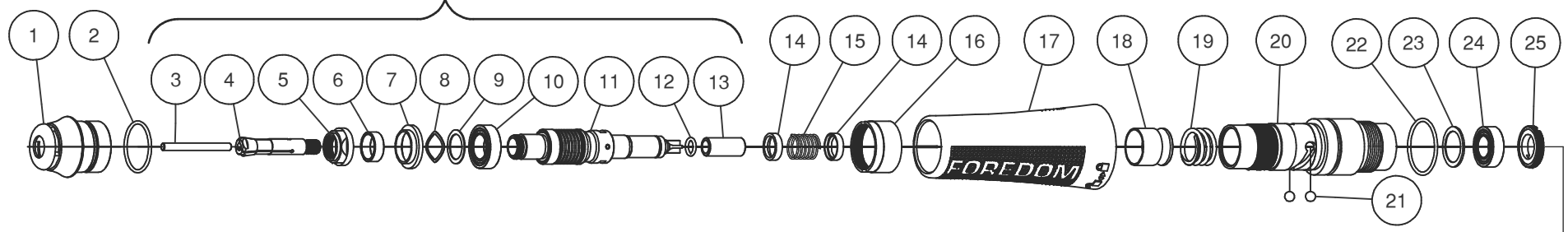


Spindle Assembly Complete  
Part No. HP6-992

**Parts List for H.MH-160  
Brushless Micromotor Handpiece**



Item	Part No.	Description	Qty
1		NOSE CONE, MICROMOTOR HANDPIECE	1
2		O-RING, NOSE CONE	1
3		BUR, BLANK	1
4	HP6-117	COLLET, Ø2.35 mm	1
5		NUT, BEARING RETAINER	1
6		BRASS SPACER, BEARING	1
7		BRASS SHIELD, BEARING	1
8	HP6-103	WAVY WASHER	1
9		FLAT WASHER	1
10	HP6-202	BALL BEARING, 1480ZZ	1
11		SPINDLE ASSEMBLY	1
12		O-RING, SPINDLE	1
13	HP6-123	DRIVE CONNECTOR	1
14	HP6-026	BRASS CAP, BEARING PRELOAD	2
15	HP6-025	SPRING, BEARING PRELOAD	1
16		THREADED RING, FRONT HOUSING	1
17		FRONT HOUSING	1
18		PLUNGER	1
19		SPRING, PLUNGER	1
20	HP6-028	SPINDLE HOUSING	1
21	HP6-029	BALL, Ø.125 Inch	2
22		O-RING, SPINDLE HOUSING	1

Item	Part No.	Description	Qty
23		WASHER, BEARING THRUST	1
24	HP6-203	BALL BEARING 1370ZZ	1
25		THREADED LOCKING RING, REAR SPINDLE BEARING	1
26		MICROMOTOR CASE	1
27	HP6-200	STATOR ASSEMBLY	1
28		STATOR SPACER	1
29	HP6-204	BALL BEARING, 830ZZ	2
30		PERMANENT MAGNET ROTOR	1
31		REAR BEARING HOLDER	1
32		BRASS SPACER, REAR BEARING	1
33		O-RING, REAR BEARING	1
34		REAR BEARING RETAINER	1
35		THREADED RETAINER RING, STATOR	1
36	HP6-174	CORDSET ASSEMBLY	1
37	HP6-993	COLLET WRENCH	1
38	HP6-994	NOSECONE WRENCH	1
39	HP6-117B	COLLET, Ø1/8 INCH	1
40	HP6-117C	COLLET, Ø3 mm	1

**FOREDOM®** Freedom Electric Company  
16 Stony Hill Rd., Bethel, CT 06801 • 203-792-8622  
Fax: 203-796-7861 • www.foredom.net