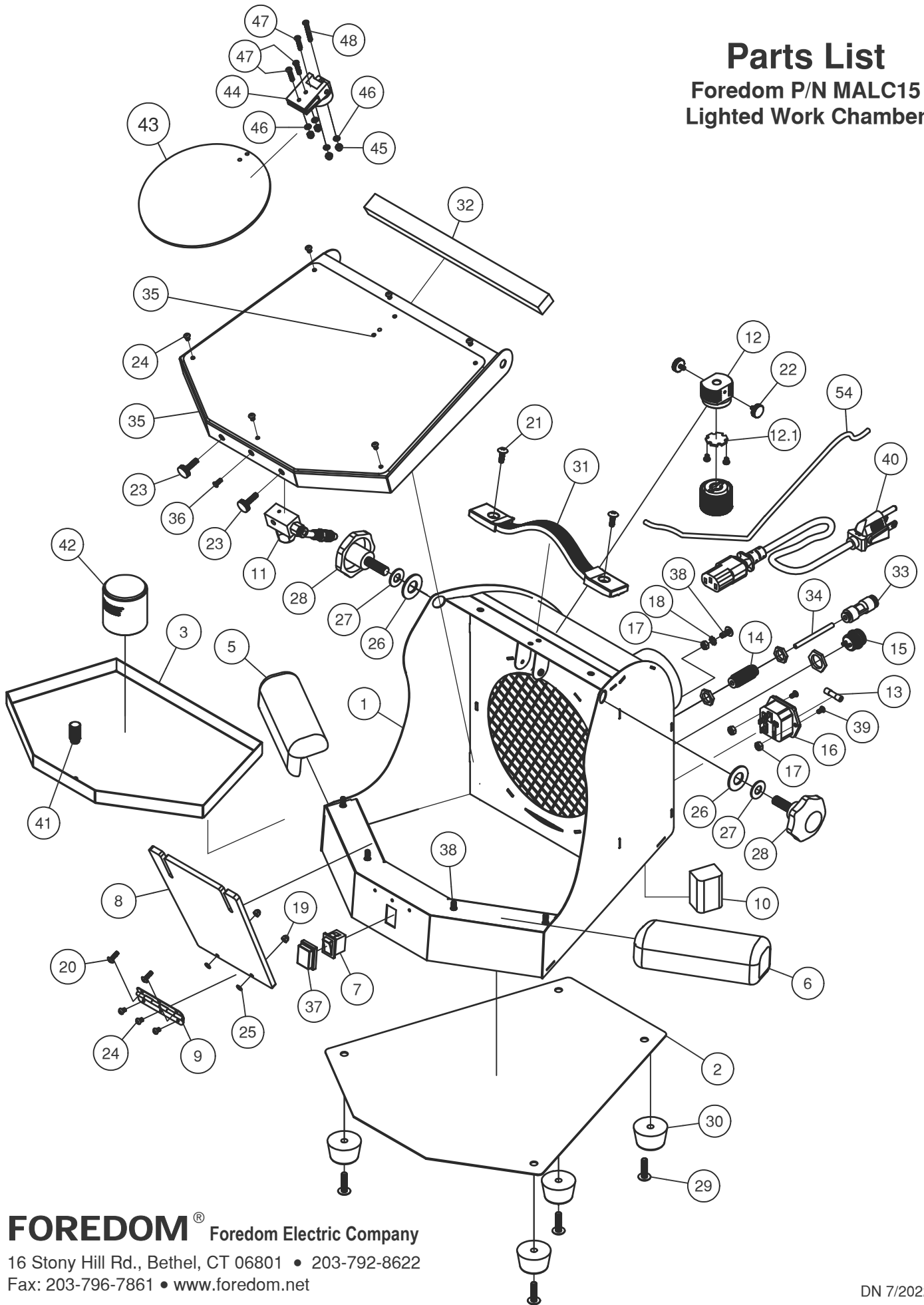


# Parts List

## Freedom P/N MALC15 Lighted Work Chamber



**FOREDOM**® Freedom Electric Company  
 16 Stony Hill Rd., Bethel, CT 06801 • 203-792-8622  
 Fax: 203-796-7861 • www.foredom.net

# Parts List

## MALC15

### Lighted Work Chamber

Item	Part No.	Description	Qty
1	---	Housing	1
2	---	Base Cover	1
3	---	Tray	1
4	MALC201	Upper Shield	1
5	MA603	Left Wrist Rest	1
6	MA602	Right Wrist Rest	1
7	MALC204	Switch	1
8	MALC202	Lower Shield	1
9	MALC205	Shield Hinge	1
10	MALC206	LED Driver	1
11	MALC207	Nozzle Assembly	1
12	MALC208	LED Light Assembly	1
12.1	MAFH106	LED Bulb (Plug-in)	1
13	MALC209	Fuse, 1A	1
14	---	Pneumatic Fitting, Ø5/32"	1
15	---	Remote Connector	1
16	---	Power Inlet	1
17	---	Hex Nut, M3	3
18	---	Washer, M4	1
19	---	Acorn Nut, M3	2
20	---	Screw, M3 x 10mm	5
21	---	Screw, M4 x 12mm	2
22	---	Knob Screw, M3	2
23	MALC216	Knob Screw, M4	2
24	---	Screw, M3 x 5mm	9
25	---	Spring Lockwasher, M3	2
26	MALC211	Flat Washer, M6, ABS	2
27	---	Flat Washer, M8, Steel	2
28	MALC215	Knob Screw, M8	2
29	---	Screw, M5 x 20mm	4
30	---	Rubber Foot	4
31	---	Carrying Handler	1
32	MALC212	Foam Gasket	1
33	MALC213	Union Reducer, 6 to 4mm	1
	MALC222	Union Reducer, 1/4 in to 4mm	-
34	MALC220	Tubing 4mm	1
	MALC221	Tubing 1/4 in	-
35	---	Shield Frame	1
36	---	Screw, M3 x 5mm, Flathead	1
37	MALC214	Switch Cover	1
38	---	Screw, M4 x 10mm	5
39	---	Screw, M3 x 6mm	2
40		Detachable Cordset Options	1
	CP10831	North American	
	CP10834	United Kingdom	
	CP10835	Continental European	
	CP10836	Australian	
	CP10838	Israeli	
41	---	Drain Plug	1
42	A-MWR03	Magnetic Work Rest	1
43	MALC203	Magnefier with Hinge Includes 45,46,47	1
44	MALC210	Hinge Assembly Includes 45,46,47	1
45	---	Acorn Nut, M3	4
46	---	Spring Lockwasher, M3	4
47	---	Screw, M3 x 16mm	3
48	---	Screw, M3 x 25mm	1

**FOREDOM**<sup>®</sup> Freedom Electric Company

16 Stony Hill Rd., Bethel, CT 06801 • 203-792-8622  
 Fax: 203-796-7861 • www.foredom.net