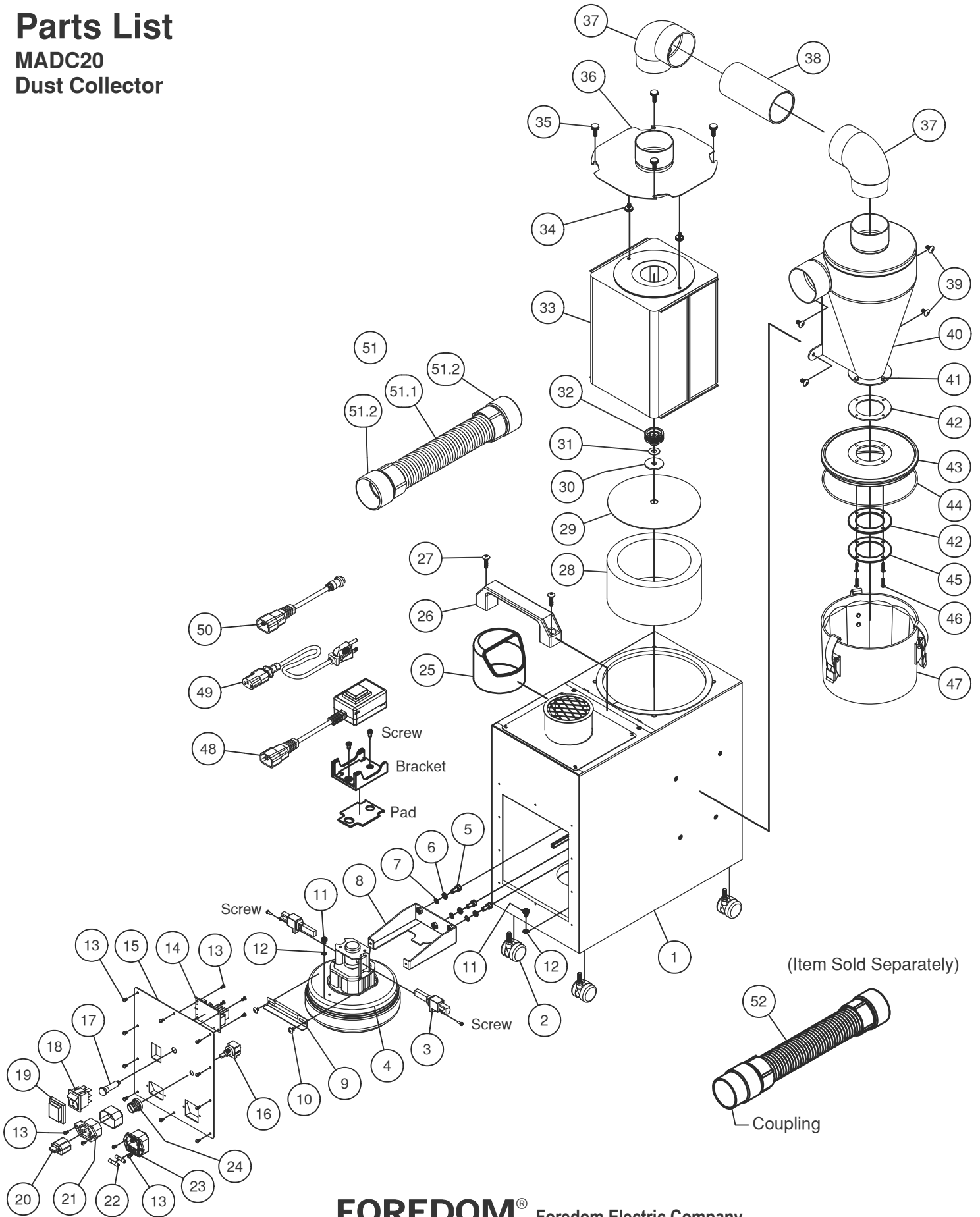


Parts List

MADC20

Dust Collector



FOREDOM® Freedom Electric Company
 16 Stony Hill Rd., Bethel, CT 06801 • 203-792-8622
 Fax: 203-796-7861 • www.foredom.net

Parts List

MADC20 Dust Collector

| Item | Part No. | Description | Qty | Item | Part No. | Description | Qty |
|------|----------|---------------------------|-----|------|----------|--------------------------------------|-----|
| 1 | | Housing | 1 | 29 | | Filter Cover | 1 |
| 2 | MA824 | Caster | 4 | 30 | | Rubber Washer | 1 |
| 3 | MP810P | Motor Brush, 115V, (Pair) | 1 | 31 | | Washer, M8 | 1 |
| 4 | MP801 | Motor, 115V, for MADC20 | 1 | 32 | | Knob, Filter | 1 |
| 5 | | Cap Screw, M5 x 12mm | 3 | 33 | MADC205 | HEPA Filter | 1 |
| 6 | | Spring Washer | 3 | 34 | | Threaded Knob, M4 x 8mm | 2 |
| 7 | | Lock Washer, M5 | 3 | 35 | | Threaded Knob, M4 x 10mm | 4 |
| 8 | | Motor Support | 1 | 36 | | Top Back Panel | 1 |
| 9 | | Motor Support Bar | 1 | 37 | MA825 | Elbow, Ø2-1/4" | 2 |
| 10 | | Screw, M4 x 6mm | 2 | 38 | MA826 | Straight Tube, Ø2-1/4" x 4-1/2" | 1 |
| 11 | – | Ground Screw, M4 x 8mm | 2 | 39 | | Screw, M5 x 10mm | 4 |
| 12 | – | Lock Washer, M4 | 2 | 40 | | Cyclone Housing | 1 |
| 13 | | Screw, M3 x 6mm | 22 | 41 | | Acorn Nut, M3 | 3 |
| 14 | CP805 | Circuit Board, 115V | 1 | 42 | MA832 | Bowl Gasket | 2 |
| 15 | | Front Control Panel | 1 | 43 | MA834 | Cover, Cylone Bowl | 1 |
| 16 | CP803 | Potentiometer | 1 | 44 | MA833 | Bowl O-Ring | 1 |
| 17 | | Indicator Light | 1 | 45 | MA836 | Lid, Spacer | 1 |
| 18 | CP802 | Power Switch | 1 | 46 | MA837 | Screw, M3 x 15mm | 4 |
| 19 | CP808 | Power Switch Cover | 1 | 47 | | Bowl Subassembly | 1 |
| 20 | | Receptacle Safety Cover | 1 | 48 | MA822 | Remote Switch | 1 |
| 21 | | Remote Connect Inlet | 1 | 49 | CP10831 | Cordset, North American | 1 |
| 22 | CP804 | Fuse, 8 Amp, Time Lag | 2 | 50 | MA820 | Remote Cable Assembly | 1 |
| 23 | | Power Inlet | 1 | 51 | | Flexible Hose Assembly 5ft (1.5M) | 1 |
| 24 | | Knob, Speed Control | 1 | 51.1 | | Flexible Hose | 1 |
| 25 | MADC209 | Exhaust Deflector | 1 | 51.2 | | Hose Connector | 2 |
| 26 | MA823 | Handle | 1 | 52 | MADCVH-5 | Hose Assembly 5ft (1.5M) w/ Coupling | 1 |
| 27 | | Screw, M5 x 20mm | 2 | * | MA831 | Bowl Assembly Includes 42-47 | 1 |
| 28 | MADC208 | Canister Filter | 1 | * | MADC210 | Cyclone Assembly Including 40-47 | 1 |

* Items not shown in the Exploded View.

FOREDOM[®] Foredom Electric Company

16 Stony Hill Rd., Bethel, CT 06801 • 203-792-8622

Fax: 203-796-7861 • www.foredom.net

EP 12/2022