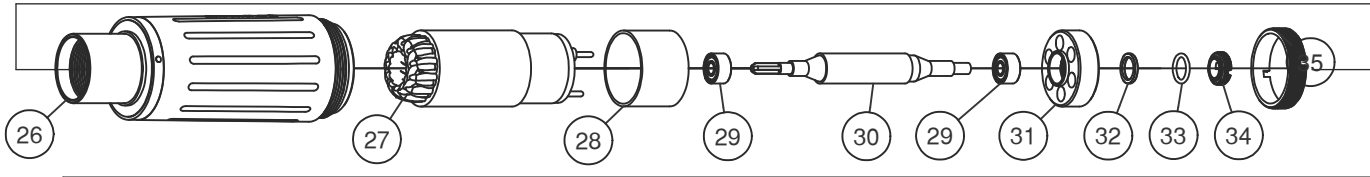
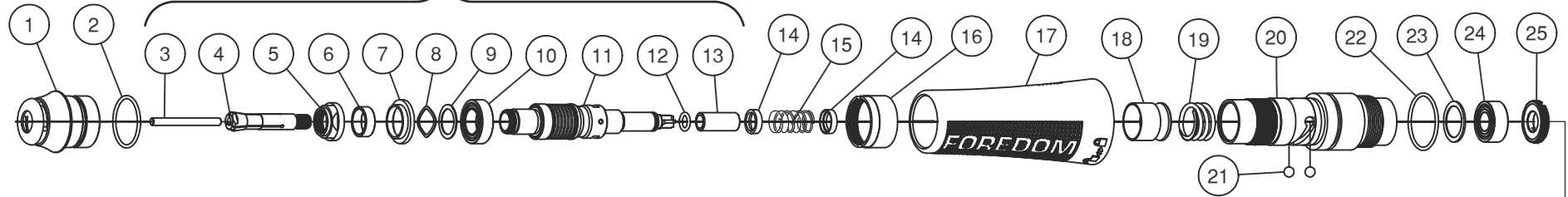


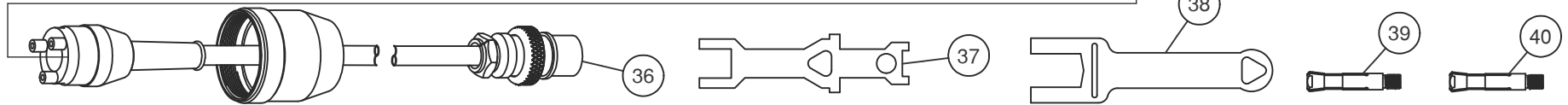
Spindle Assembly Complete
Part No. HP6-992A

Parts List for H.MH-160 Brushless Micromotor Handpiece

Applies to Serial Nos. 20092XXXX and After



Front Housing Assembly
P/N HP6-0001
(Items 1-25)



Item	Part No.	Description	Qty	Item	Part No.	Description	Qty
1		NOSE CONE, MICROMOTOR HANDPIECE	1	23		WASHER, BEARING THRUST	1
2		O-RING, NOSE CONE	1	24	HP6-203A	BALL BEARING 1360ZZ	1
3		BUR, BLANK	1	25		THREADED LOCKING RING, REAR SPINDLE BEARING	1
4	HP6-117	COLLET, Ø2.35 mm	1	26		MICROMOTOR CASE	1
5		NUT, BEARING RETAINER	1	27	HP6-200	STATOR ASSEMBLY	1
6		BRASS SPACER, BEARING	1	28		STATOR SPACER	1
7		BRASS SHIELD, BEARING	1	29	HP6-204	BALL BEARING, 830ZZ	2
8	HP6-103	WAVY WASHER	1	30		PERMANENT MAGNET ROTOR	1
9		FLAT WASHER	1	31		REAR BEARING HOLDER	1
10	HP6-202	BALL BEARING, 1480ZZ	1	32		BRASS SPACER, REAR BEARING	1
11		SPINDLE ASSEMBLY	1	33		O-RING, REAR BEARING	1
12		O-RING, SPINDLE	1	34		REAR BEARING RETAINER	1
13	HP6-123	DRIVE CONNECTOR	1	35		THREADED RETAINER RING, STATOR	1
14	HP6-026A	BRASS CAP, BEARING PRELOAD	2	36	HP6-174	CORDSET ASSEMBLY	1
15	HP6-025A	SPRING BEARING, PRELOAD	1	37	HP6-993	COLLET WRENCH	1
16		THREADED RING, FRONT HOUSING	1	38	HP6-994	NOSECONE WRENCH	1
17		FRONT HOUSING	1	39	HP6-117B	COLLET, Ø1/8 INCH	1
18		PLUNGER	1	40	HP6-117C	COLLET, Ø3 mm	1
19		SPRING, PLUNGER	1				
20	HP6-028A	SPINDLE HOUSING	1				
21	HP6-029	BALL, Ø.125 Inch	2				
22		O-RING, SPINDLE HOUSING	1				

FOREDOM® Freedom Electric Company
16 Stony Hill Rd., Bethel, CT 06801 • 203-792-8622
Fax: 203-796-7861 • www.foredom.net