

Handpiece Accessories & Spare Parts

MAHH-30



A Handpiece Holder is available that clamps to work benches up to 2¼" thick. The height above the bench can be adjusted and the handpiece can be swiveled and locked into position.

Pins and wrenches that are lost or damaged can be ordered from your Foredom dealer or the foredom website.

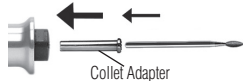
Part No. Description

MAHH-30 Handpiece Holder

HP103117 Pin and Wrench

Collet Adapters

(listed below) let you quickly switch to a smaller shank size accessory without changing the collet.



Part No. Collet Size Accessory Shank Size

HPL4-3233 3/32" → 1/16"

HPL4-3234 1/8" → 1/16"

HPL4-3235 3mm → 3/32"

HPL4-3236 1/8" → 3/32"

HPL4-3237 3mm → 1.6mm

LIMITED WARRANTY

Warranty period is 90 days for handpieces. Blackstone Industries, LLC d/b/a Foredom Electric Company warrants, to the original purchaser only, that its products will be free from defects in material or workmanship for the applicable period of time indicated above following the purchase date. During the warranty period, the defective product will be repaired or replaced without charge or, at our sole option, the purchase price will be refunded. This warranty does not cover damage caused in transit or by accident, misuse or ordinary wear.

ALL IMPLIED WARRANTIES INCLUDING, WITHOUT LIMITATION, IMPLIED WARRANTIES OF FITNESS FOR A PARTICULAR PURPOSE AND MERCHANTABILITY, ARE LIMITED IN DURATION TO THE APPLICABLE WARRANTY PERIOD. IN NO EVENT WILL WE BE LIABLE FOR ANY INCIDENTAL OR CONSEQUENTIAL DAMAGES. Some states do not allow limitations on how long an implied warranty lasts or the exclusion or limitation of incidental or consequential damages, so the above limitations or exclusion may not apply to you.

At our sole option, repair, replacement or refund will be made if the product is returned postage prepaid to:
Foredom Electric Company
16 Stony Hill Road, Bethel, CT 06801

All warranty repairs must be done at our factory at the above address. We will not pay any shipping or transportation charges. Shafts, sheaths and duplex springs are not covered by this warranty.

This warranty gives you specific legal rights, and you may also have other rights which vary from state to state.

Please retain your proof of purchase for warranty repairs.

Repair Service Factory repairs are done promptly and at reasonable cost. If you wish, you can send your equipment directly to the factory marked "Attention: Repair Department". Be sure include a brief note describing the problem and your phone number, email and street address. Estimates will be made upon request.

Never wear open shoes or sandals.

Use footwear that is tough enough to protect your feet from falling tools.

Keep both hands and fingers away from the cutting edge at all times.

Do not wear loose fitting clothing or jewelry. Loose clothing or jewelry can become tangled in the tool. Do not wear items such as neckties, necklaces, or bracelets when operating power tools. Secure or tie back long hair.

Use both hands whenever possible to hold and guide the tool.

Avoid knots, imperfections in the wood or metal objects like nails, which could catch or damage the tool bit. Let the speed of the tool do the work.

Never use a damaged, bent, vibrating, or out of balance accessory.

FOREDOM® H.44HT & H.43HT Square Drive Collet-Style Handpiece IMPORTANT INSTRUCTIONS

Always wear proper eye protection while using this handpiece.

Wear safety glasses or a face shield whenever you operate a Foredom Flexible Shaft machine or any power tool to prevent serious eye injury.

See your power tool owner's manual for complete instructions on use and maintenance.

Before attaching this handpiece please read these instructions. They should always be followed to reduce the risk of personal injury or damage to the handpiece.

Always use a proper dust collection system or wear a respirator to prevent the inhalation of dust particles or other debris into the lungs.

Foredom Electric Company

16 Stony Hill Road, Bethel, CT 06801

call (203)792-8622, visit our website:

www.foredom.net or email:

customerservice@blackstoneind.com

Attaching H.44HT or H.43HT Handpiece to a Flexible Shaft

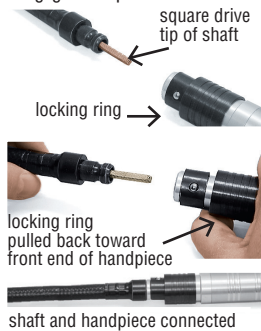
It takes a fairly strong grasp of the locking ring to pull it back. Be careful that your finger or thumb does not get pinched when you release the locking ring.

Pull back the black locking ring toward the front end of the handpiece while you insert the tip of the flex shaft. The handpiece has a square slot that the square drive tip fits into. You may need to rotate the handpiece slightly until the square drive engages the spindle.

Release the locking ring when you feel the shaft connect to the handpiece. **You should hear a click.**

To remove the handpiece Pull back the locking ring as described above with a firm grip and pull the shaft and sheath from the handpiece.

Handpieces require no lubrication. Putting oil or grease in the front or back of these handpieces will damage their pre-lubricated ball bearings and cause them to overheat. The collet seat and threads of the handpiece should be kept free of dirt, chips, dust or debris.



Maintenance and Lubrication

Flexible Shaft: Every 50 hours of use: Unscrew outer sheath connector nut (left hand thread) and remove inner drive shaft.

Lubricating a Flexible Shaft The shaft is threaded through both a silencer spring and the outer sheath. Slide both the outer sheath and the silencer spring off of the flexible shaft. Usually the silencer spring remains inside the sheath when you remove it.



Apply a **light film** of Foredom grease (MS10006) to the entire length of the inner shaft.

After every 100 hours of use clean the flexible shaft thoroughly with a solvent.

Reattach the outer sheath and run motor for ten minutes before re-connecting handpiece. Turn off motor, wipe off excess grease from tip of drive shaft and reattach the shaft to the handpiece. If excess grease leaks into the handpiece, it can cause overheating and damage the bearings.

Foredom grease (MS10006) can also be ordered from your dealer or from Foredom at: www.foredom.net



Changing Accessories (or burs)

Be sure the shank size of the accessory is paired with the same size collet. Inserting an accessory which is too small or too large may damage the collet.

Insert the pin provided into the hole in the side of the handpiece and through the spindle hole (turn spindle to align the holes). Use the wrench and loosen the chuck nut slightly by turning counterclockwise. Insert the shank of the accessory into the collet. Tighten the chuck nut with wrench, keeping the pin in the hole. Test for a secure hold by pulling on the accessory. Remove the pin.

Pins and wrenches (HP10588) that are lost or damaged can be ordered from your dealer or from Foredom at: www.foredom.net

Changing Collets

The different size collets that come with your handpiece are for holding burs and other accessories with different shank sizes.



Chuck Nut and Collet



Do NOT tighten an empty collet or insert an accessory shank which is too small or too large — it can damage the collet.

Never screw the chuck nut back on too tightly.

To change a collet, insert the pin into the hole in the side of the handpiece **and** through the spindle hole (turn the spindle to align the holes). Use the wrench and unscrew the chuck nut by turning counterclockwise. Remove the chuck nut to expose the collet and pull the collet out of handpiece spindle. Slip the new collet in place and screw on chuck nut with pin and wrench.



Collets for H.44HT and H.43HT

P/N	Capacity	P/N	Capacity
HP442	3/32" *	HP447	1/4" *
HP443	1/8" *	HP448	3mm
HP444	5/32"	HP449	6mm
HP445	3/16"		

HP440 Set Includes all seven collets.

*Supplied with handpiece