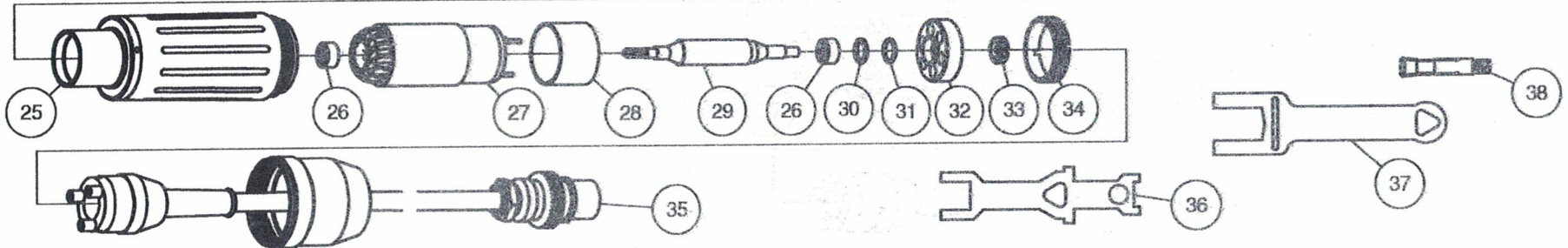
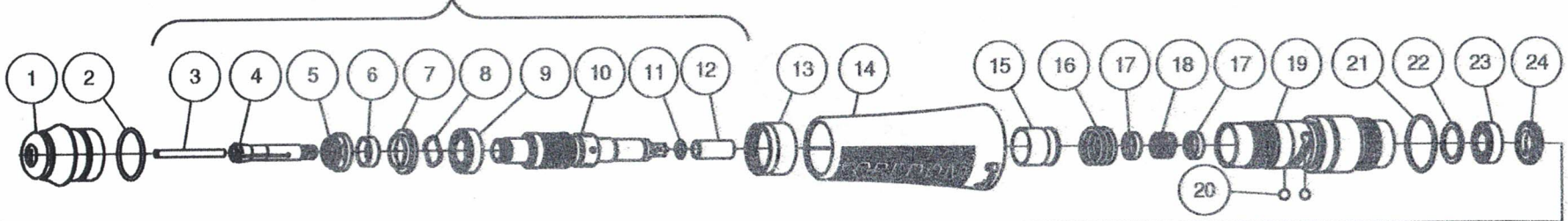


Spindle Assembly Complete  
Part No. HP6-992

Parts List for H.MH-160  
Brushless Micromotor Handpiece



Item	Part No.	Description	Qty
1		NOSE CONE, MICROMOTOR HANDPIECE	1
2		O-RING, NOSE CONE	1
3		BUR, BLANK	1
4	HP6-117	COLLET, 2.35mm	1
5		NUT, BEARING RETAINER	1
6		BRASS SPACER, BEARING	1
7		BRASS SHIELD, BEARING	1
8	HP6-103	WAVY WASHER	1
9	HP6-202	BALL BEARING, 1480ZZ	1
10		SPINDLE ASSEMBLY	1
11		O-RING, SPINDLE	1
12	HP6-123	DRIVE CONNECTOR	1
13		THREADED RING, FRONT HOUSING	1
14		FRONT HOUSING	1
15		PLUNGER	1
16		SPRING, PLUNGER	1
17	HP6-026	BRASS CAP, BEARING PRELOAD	2
18	HP6-025	SPRING, BEARING PRELOAD	1
19	HP6-028	SPINDLE HOUSING	1
20	HP6-029	BALL, Ø.125 Inch	2
21		O-RING, SPINDLE HOUSING	1

Item	Part No.	Description	Qty
22		WASHER, BEARING THRUST	1
23	HP6-203	BALL BEARING 1370ZZ	1
24		THREADED LOCKING RING, REAR SPINDLE BEARING	1
25		MICROMOTOR CASE	1
26	HP6-204	BALL BEARING, 830ZZ	2
27		STATOR ASSEMBLY	1
28		STATOR SPACER	1
29		PERMANENT MAGNET ROTOR	1
30		BRASS SPACER, REAR BEARING	1
31		O-RING, REAR BEARING	1
32		REAR BEARING HOLDER	1
33		REAR BEARING RETAINER	1
34		THREADED RETAINER RING, STATOR	1
35	HP6-174	CORDSET ASSEMBLY	1
36	HP6-993	COLLET WRENCH	1
37	HP6-994	NOSE CONE WRENCH	1
38	HP6-117B	COLLET, 1/8 INCH	1

**FOREDOM®** Freedom Electric Company  
16 Stony Hill Rd., Bethel, CT 06801 • 203-792-8622  
Fax: 203-796-7861 • www.foredom.net