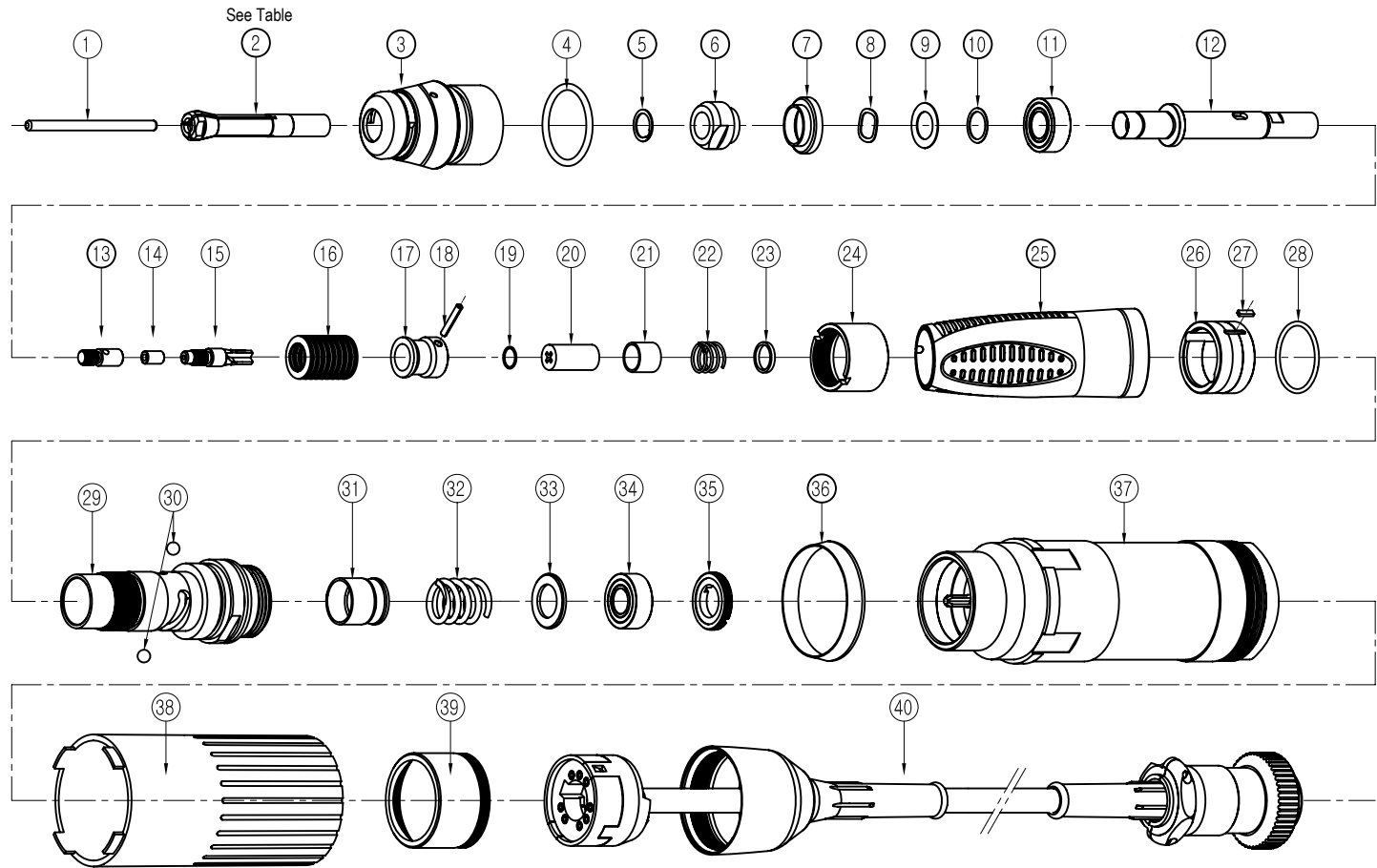


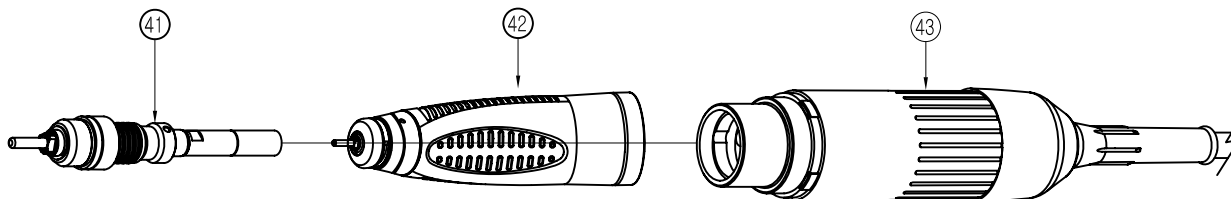
Item	Part Name	Part No.	Qty
1	TEST BUR		1
2	COLLET CHUCK	See Table	1
3	NOSE CAP	HP7-5001	1
4	NOSE CAP O-RING	HP7-7002	1
5	CHUCK HOUSING C-RING	HP7-3104	1
6	COLLAR		1
7	B/R STOP COLLAR		1
8	814 WAVE WASHER	HP7-3103	1
9	814 WASHER 2	HP7-3112	1
10	814 WASHER 1	HP7-3111	1
11	BALL BEARING(814)	HP7-8017	1
12	CHUCK HOUSING		1
13	CONNECTION PIN		1
14	SPACER		1
15	JOINT SHAFT		1
16	DISC SPRING		1
17	SPRING STOPPER		1
18	SPRING PIN		1
19	O-RING		1
20	CONNECTOR	HP7-5014	1
21	SPRING SPACER	HP7-5024	1
22	COIL SPRING	HP7-5025	1
23	SPRING SHEET	HP7-5026	1
24	HAND CAP STOPPOR		1
25	HAND CAP INSERT		1
	HAND CAP		1
26	SET RING		1
27	SET KEY		1
28	CAM O-RING		1
29	CAM	HP7-5028	1
30	BALL	HP7-8029	1
31	MOVEING HOUSING	HP7-5030	1
32	COIL SPRING		1
33	B/R COLLAR	HP7-5032	1
34	BALL BEARING(1360)	HP7-8033	1
35	B/R STOP BOLT	HP7-5034	1
36	MOTOR CASE RING		1
37	MOTOR		1
38	MOTOR CASE COVER		1
39	MOTOR CASE INSERT		1
40	MOTOR CORD ASS'Y	HP7-1003	1
41	BHS1 SPINDLE ASS'Y	HP7-1001	1
42	BHS1 HEAD ASS'Y	HP7-0001	1
43	BM50M MOTOR ASS'Y	HP7-1002	1

Parts List MH-150 Brushless Micromotor Handpiece

for Serial No. 811XXXX and above



Part No.	Collet Size	Option
HP4-117	2.35mm (3/32")	Standard
HP4-117B	3.18mm (1/8")	Available
HP4-117C	3.00mm	Available



FOREDOM[®] Foredom Electric Company
 16 Stony Hill Rd., Bethel, CT 06801 • 203-792-8622
 Fax: 203-796-7861 • www.foredom.net