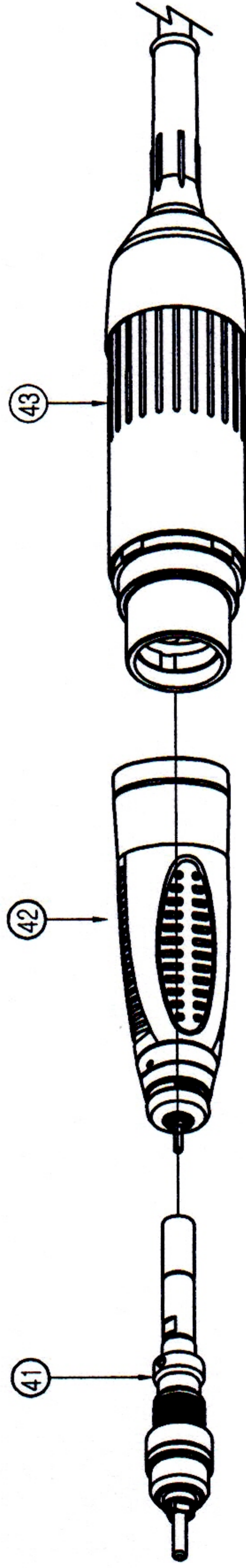
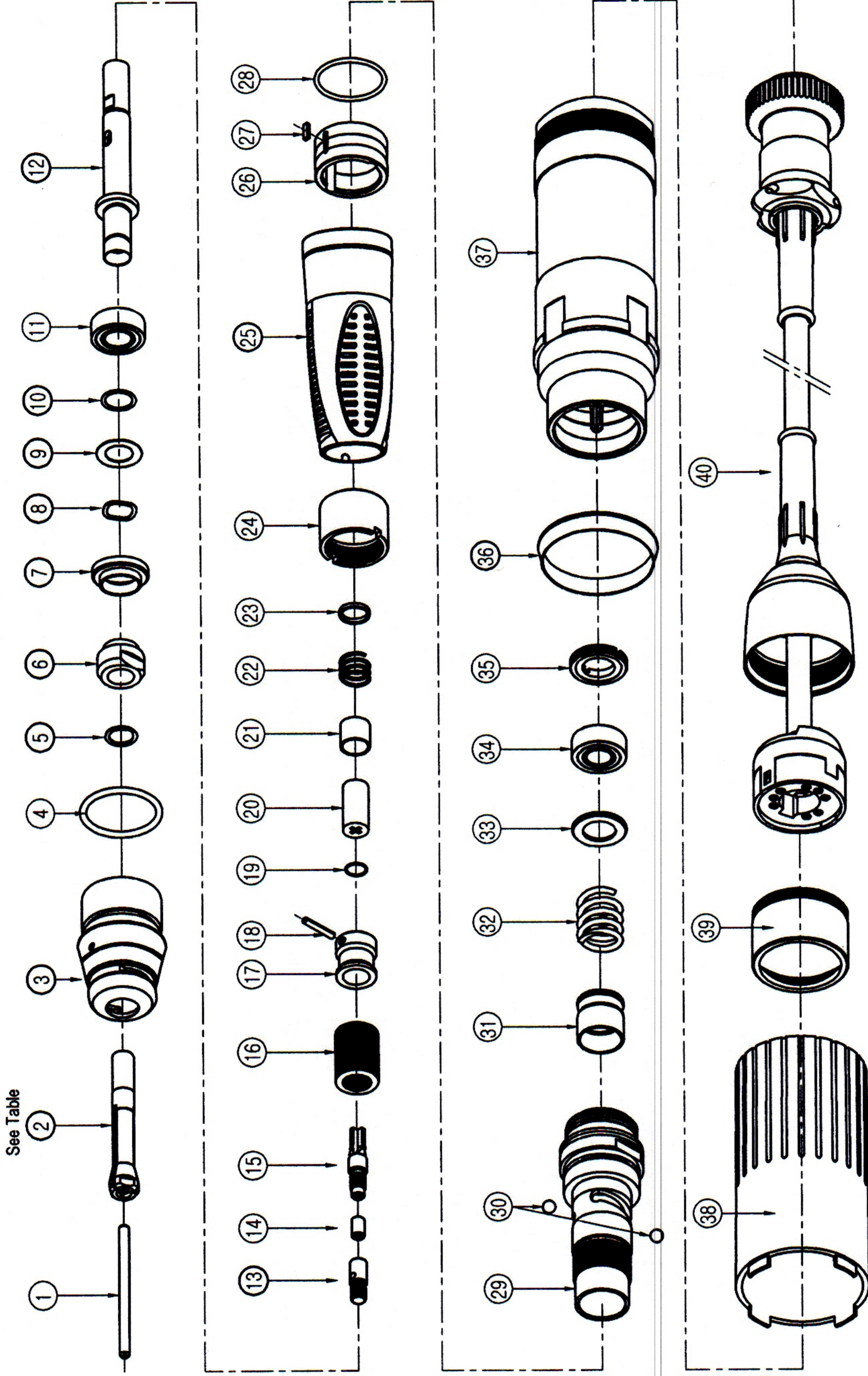


Parts List MH-150 Brushless Micromotor Handpiece

for Serial No. 811XXX and above

Item	Part Name	Part No.	Qty	Price
1	TEST BUR	See Table	1	
2	COLLET CHUCK	HP7-5001	1	
3	NOSE CAP	HP7-7002	1	
4	NOSE CAP O-RING	HP7-3104	1	
5	CHUCK HOUSING C-RING		1	
6	COLLAR		1	
7	B/R STOP COLLAR	HP7-3103	1	
8	814 WAVE WASHER		1	
9	814 WASHER 2		1	
10	814 WASHER 1		1	
11	BALL BEARING(814)	HP7-8017	1	
12	CHUCK HOUSING		1	
13	CONNECTION PIN		1	
14	SPACER		1	
15	JOINT SHAFT		1	
16	DISC SPRING		1	
17	SPRING STOPPER		1	
18	SPRING PIN		1	
19	O-RING		1	
20	CONNECTOR		1	
21	SPRING SPACER	HP7-6025	1	
22	COIL SPRING		1	
23	SPRING SHEET		1	
24	HAND CAP STOPPOR		1	
25	HAND CAP INSERT		1	
26	HAND CAP		1	
27	SET RING		1	
28	SET KEY		1	
29	CAM O-RING		1	
30	CAM	HP7-5028 HP7-8029	1	
31	MOVING HOUSING		1	
32	COIL SPRING		1	
33	B/R COLLAR	HP7-5032	1	
34	BALL BEARING(1360)	HP7-8033	1	
35	B/R STOP BOLT	HP7-5034	1	
36	MOTOR CASE RING		1	
37	MOTOR		1	
38	MOTOR CASE COVER		1	
39	MOTOR CASE INSERT		1	
40	MOTOR CORD ASSY	HP7-1003	1	
41	BH51 SPINDLE ASSY	HP7-1001	1	
42	BH51 HEAD ASSY	HP7-0001	1	
43	BM50M MOTOR ASSY		1	

Part No. Collet Size Option
 HP4-117 2.35mm (3/32") Standard
 HP4-117B 3.18mm (1/8") Available
 HP4-117C 3.00mm Available



FOREDOM

The Foredom Electric Company
 16 Stony Hill Rd., Bethel, CT 06801
 Tele: 203-792-8622 Fax: 203-796-7861
www.foredom.com