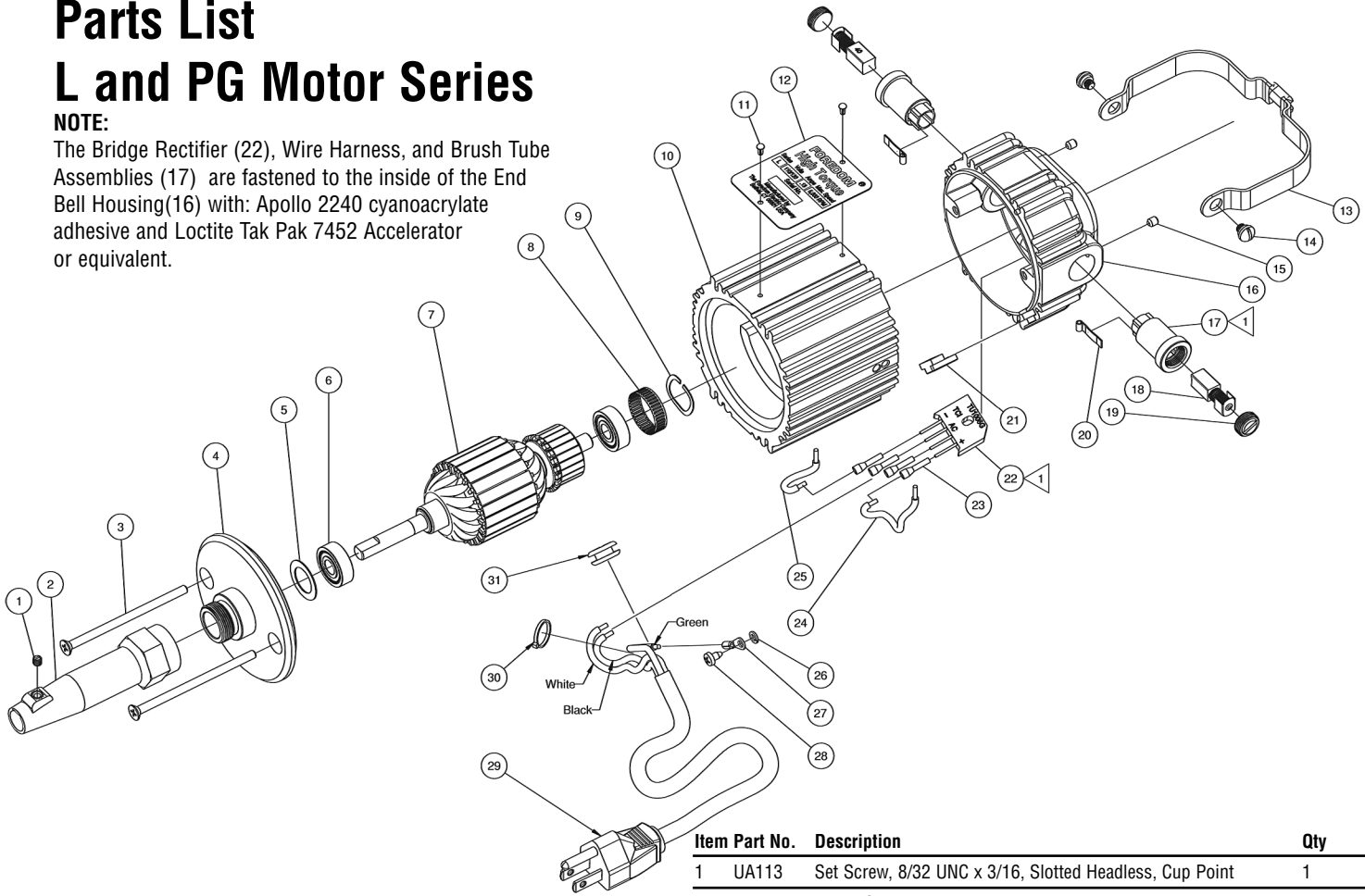


Parts List

L and PG Motor Series

NOTE:

The Bridge Rectifier (22), Wire Harness, and Brush Tube Assemblies (17) are fastened to the inside of the End Bell Housing(16) with: Apollo 2240 cyanoacrylate adhesive and Loctite Tak Pak 7452 Accelerator or equivalent.



Motor Series	Motor Part No.	Armature Assembly (Includes 2 Ball Bearings) Part No.	Specification Nameplate Part No.
L 115V	MP90-677	MP325	UA10384-L
L 230V	MP90-676	MP326	UA10384-L2
PG 115V	MP90-577	MP321	F-PG-GEN
PG 230V	MP90-606	MP322	F-PG-GEN

Item	Part No.	Description	Qty
1	UA113	Set Screw, 8/32 UNC x 3/16, Slotted Headless, Cup Point	1
2	UA111P	Motor Connector	1
3		Machine Screw 8/32 UNC x 2 ⁵ / ₁₆ " , 100° Cross Recessed Flat Head	2
4		End Plate	1
5		Washer, Plain, Ø.859 x Ø.562 x .020, Steel	1
6	HP61	Ball Bearing, Ø22mm x Ø8mm x 7mm	2
7	See table	Armature Assembly (Includes 2 Ball Bearings)	1
8		Tolerance Ring, AN 22X7C	1
9		Washer, Wavy Spring, Ø.862 x Ø.673 x .109 x .014 Thick	1
10		Center Housing	1
11	UA577	Grooved Stud, Ø.086 x .187	2
12	See Table	Specification Nameplate	1
13	UA105	Motor Hanger	1
14	UA106	Motor Hanger Screw	2
15		Set Screw, 8 32 UNC x 3/16, Hexagon Socket, Cup Point	2
16		End Bell Housing	1
17	MP318	Brush Tube	2
18	MP319P	Brush, Motor (Pair)	1
19	MP120	Cap, Brush Tube	2
20		Terminal, Brush	1
21		Grommet Plate	1
22		Bridge Rectifier 8Amp 1000V	1
23		Shrink Tubing 5/8"	4
24		Wire Red 2.5" 18 AWG 600V 105C TEW UL CSA	1
25		Wire Black 2.5" 18 AWG 600V 105C TEW ULCSA	1
26		Lock Washer, #6, Regular Helical Spring	1
27		Terminal Ring, #6	1
28		Self Tapping Screw, #6 -32 x 1/4, Cross Recessed Pan Head	1
29	CP10541	Cordset, Male, NEMA 5-15P	1
30		Tie Rap	1
31		Strain Relief Grommet	1

FOREDOM®

The Freedom Electric Company

16 Stony Hill Rd., Bethel, CT 06801 • 203-792-8622

Fax: 203-796-7861 • www.foredom.net

Email: customerservice@blackstoneind.com