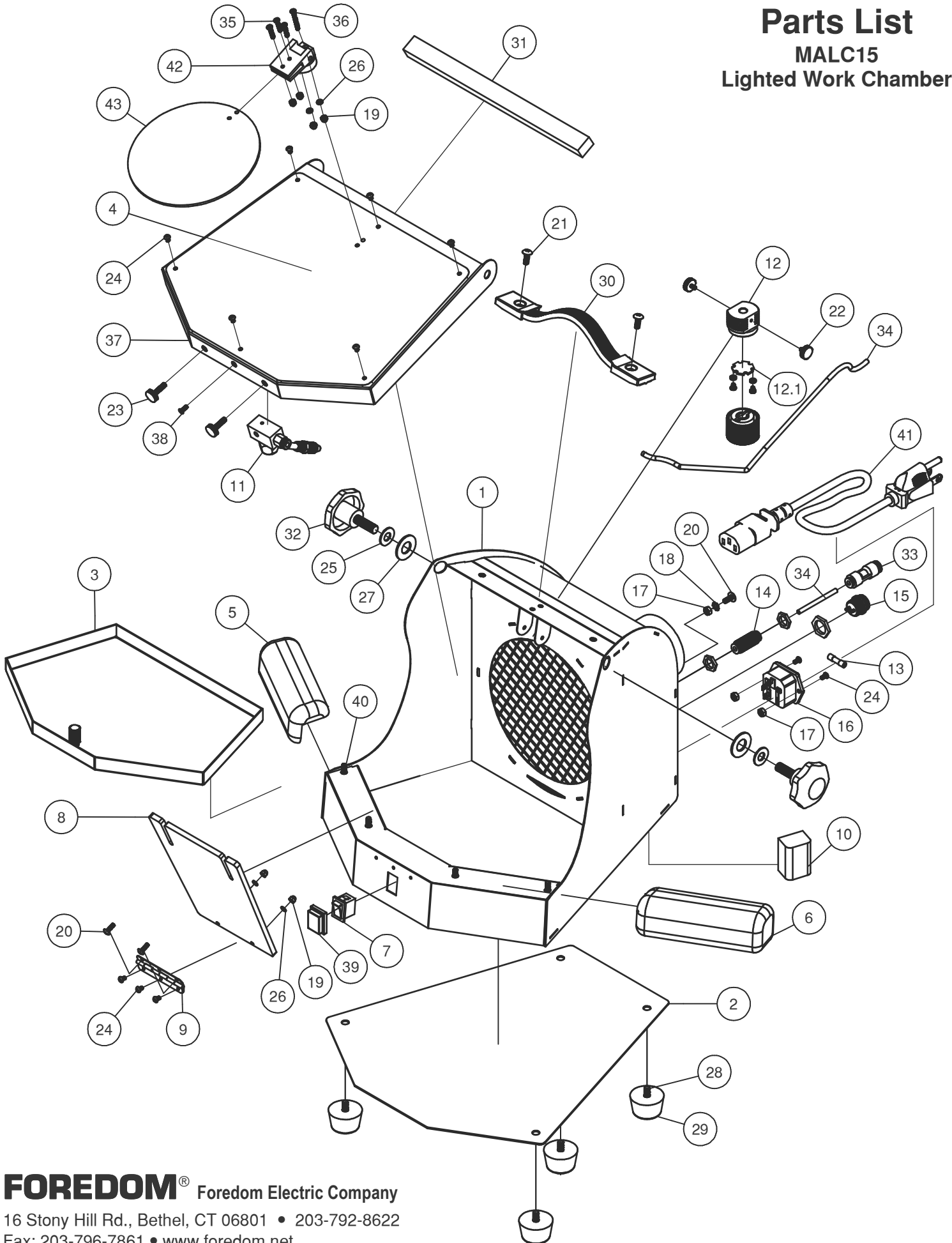


# Parts List

## MALC15

### Lighted Work Chamber



# Parts List

## MALC15

### Lighted Work Chamber

Item	Part No.	Description	Qty
1	---	Housing	1
2	---	Base Cover	1
3	---	Tray	1
4	MALC201	Upper Shield	1
5	MA603	Arm Rest A	1
6	MA602	Arm Rest B	1
7	MALC204	Switch	1
8	MALC202	Lower Shield	1
9	MALC205	Shield Hinge	1
10	MALC206	LED Driver	1
11	MALC207	Nozzle Assembly	1
12	MALC208	LED Light Assembly	1
12.1	MAFH106	LED Bulb (Plug-in)	1
13	MALC209	Fuse, 1A	1
14	---	Pneumatic Fitting	1
15	---	Remote Connector	1
16	---	Power Inlet	1
17	---	Hex Nut, M4	3
18	---	Washer, M4	1
19	---	Acorn Nut, M3	6
20	---	Screw, M3x10	5
21	---	Screw, M4x12	2
22	---	Knob Screw, M3	2
23	MALC216	Knob Screw, M4	2
24	---	Screw, M3x5	9
25	---	Flat Steel Washer, M8	2
26	---	Spring Lockwasher, M3	4
27	MALC211	ABS Washer, M6	2
28	---	Screw, M5x20	4
29	---	Rubber Foot	4
30	---	Carrying Handle	1
31	MALC212	Foam Gasket	1
32	MALC215	Knob Screw, M8	2
33	MALC213	Union Reducer, 6 to 4mm	1
	MALC222	Union Reducer, 1/4 in to 4mm	-
34	MALC220	Tubing 4mm	1
	MALC221	Tubing 1/4 in	-
35	---	Screw, M3x16	3
36	---	Screw, M3x25	1
37	---	Shield Frame	1
38	---	Flathead Screw, M3x5	1
39	MALC214	Switch Cover	1
40	---	Screw, M4x10	5
41		Detachable Cordset Options	1
	CP10831	North American	
	CP10834	United Kingdom	
	CP10835	Continental European	
	CP10836	Australian	
	CP10838	Israeli	
42	MALC210	Hinge, Magnifier	1
43	MALC203	Magnifier	1

**FOREDOM**<sup>®</sup> Freedom Electric Company

16 Stony Hill Rd., Bethel, CT 06801 • 203-792-8622

Fax: 203-796-7861 • www.foredom.net