

# IMPORTANT INSTRUCTIONS

## For Foredom Handpieces H.10 and H.10D

Please read these safety instructions thoroughly before operating this tool. They are for your protection and should always be followed to reduce the risk of personal injury or damage to the handpiece.

See your Power Tool Owner's Manual for complete instructions on use, care and maintenance.

### For More Information

For more information on Foredom machines, handpieces, or accessories, contact your local dealer. When no local dealer is available, visit our website at [www.foredom.com](http://www.foredom.com) or write: The Foredom Electric Co., 16 Stony Hill Road, Bethel, CT 06801, call (203) 792-8622.

Never use a damaged, bent, vibrating, or out of balance rotary accessory.

Form 1243 n 9/09

Printed in U.S.A.

### LIMITED WARRANTY

Your Foredom Quick Change Handpiece is warranted against defective material and workmanship for a period of 90 days from date of purchase. Please return it to the factory for inspection and repair. The duplex connection is particularly susceptible to damage and is not covered by warranty. Replacement duplex springs are shipped with installation instructions. This warranty does not cover damage caused in transit or by accident, misuse, or ordinary wear. ALL IMPLIED WARRANTIES, INCLUDING BUT NOT LIMITED TO WARRANTIES OF FITNESS AND MERCHANTABILITY, ARE HEREBY LIMITED IN DURATION TO A PERIOD ENDING 90 DAYS FROM DATE OF PURCHASE, AND WE WILL NOT BE LIABLE OR RESPONSIBLE FOR ANY SPECIAL OR CONSEQUENTIAL DAMAGES. Repair or replacement will be made at our option if the product is returned post-paid to:

#### The Foredom Electric Company

16 Stony Hill Road, Bethel CT 06801

All warranty repairs must be done at the factory at the address above. We will not pay any shipping or transportation charges. This warranty covers the original purchaser of the product only. Some states do not allow limitations on how long an implied warranty lasts, so the above limitation may not apply to you. This warranty gives you specific legal rights, and you may also have other rights which vary from state to state.

### Safety Instructions

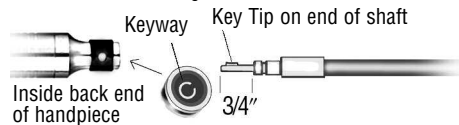
Always wear proper eye and face protection.

Wear safety glasses or a face shield whenever you operate a Foredom Flexible Shaft machine or any power tool to prevent serious eye injury.

Never use or continue to use any rotary accessory that is damaged, bent, loose, vibrating or out of balance. Inspect each accessory for cracks or flaws before using it.

Do not wear loose fitting clothing or jewelry. Loose clothing or jewelry can become entangled in the tool. Do not wear items such as neckties, necklaces, or bracelets when operating power tools. Secure or tie back long hair.

Always use a proper dust collection system or wear a respirator to prevent the inhalation of dust particles, or other debris into the lungs.



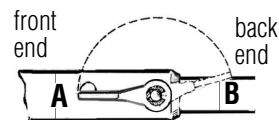
### Assembly

**Attaching the Handpiece** Be sure that the key tip of the flexible shaft is properly lined up with the slot in the back end of the handpiece by looking into the rear of the handpiece before pushing it on. If it is not in line, turn the shaft tip or the handpiece to the correct position (see drawing). To remove the handpiece, simply pull the handpiece off the shaft and sheath with a firm grip while the motor is not running.

**Note: Handpiece can run only with 2.35mm, 3mm or (3/32") shank bur inserted.**

**3mm collets to hold 3mm shank burs are available from your favorite Foredom dealer or from Foredom.**

**Do not operate with lever in open position—this will cause handpiece to lock up.**



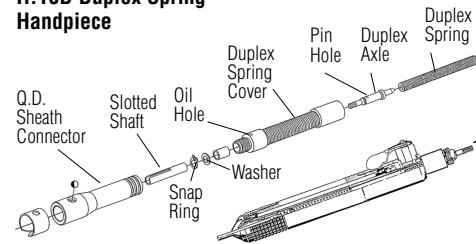
**A**— chuck is closed and the bur is locked

**B**— chuck is open

### Attaching Accessories

1. **To Insert Bur** Move Lever 180° clockwise towards the back of the handpiece (see drawing — position B).
2. Insert or change bur. Make sure bur's shank diameter matches the collet size (2.35mm, 3/32" or 3mm).
3. Move lever 180° counterclockwise, toward front of the handpiece (see drawing — position A). Make sure lever is completely locked into forward position and pull on bur to be sure that it is secured.

### H.10D Duplex Spring Handpiece



### Routine Maintenance for H.10D Handpiece with Duplex Spring Connection:

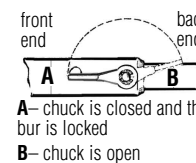
Approximately every 20 hours of operation, apply 1 or 2 drops of Foredom oil into the hole in the Duplex Spring Cover next to the Q.D. Sheath Connector. This will provide sufficient lubrication for the Duplex Spring Cover and Duplex Axle.

### Cleaning the H.10D Duplex Spring Handpiece

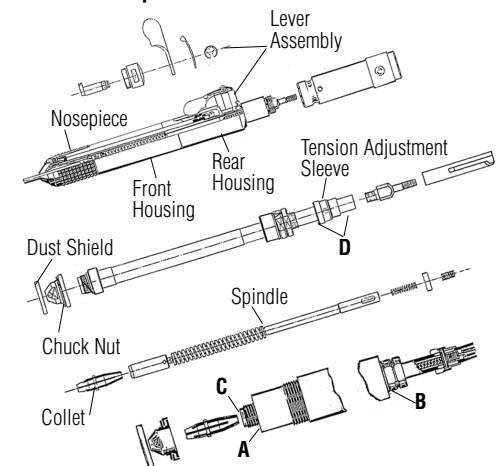
1. First remove the accessory or bur from the handpiece.
2. Next remove the handpiece from the flexible shaft. To remove the handpiece, simply pull the handpiece off the shaft and sheath with a firm grip while the motor is not running.
3. Using two pliers, remove QD Sheath Connector from the Duplex Spring Cover. Use pliers carefully to avoid marking or damaging handpiece parts.
4. Put a pin through Pin Hole in Duplex Axle and use pliers to remove Slotted Shaft.
5. Remove Washer and Snap Ring on Duplex Axle. Follow instructions for H.10 Handpiece.

### Routine Maintenance for H.10 Handpiece:

1. First remove the accessory or bur from the handpiece and remove the handpiece from the flexible shaft. To remove the handpiece, simply pull the handpiece off the shaft and sheath with a firm grip while the motor is not running.
2. Using a 5/16" wrench, remove Lever Assembly.  
**Keep the Lever in the locked position when you remove it and re-attach it.**
3. Remove Nosepiece by grasping it and Rear Housing with two pliers.
4. Remove Rear Housing by grasping Front Housing and Rear Housing with pliers.
5. With pliers, grasp Tension Adjustment Sleeve, put 1/4" wrench on Chuck Nut and unscrew to remove.
6. Remove Collet by pulling it out of the handpiece.
7. Immerse handpiece in a cleaning fluid such as alcohol. DO NOT USE WATER.



### H.10 Handpiece



8. While handpiece is immersed, turn Spindle to clean bearings.
9. If available, use compressed air to dry handpiece after removing from cleaning fluid. If not, let handpiece dry on paper towel.
10. Clean remaining parts of handpiece with small brush and cleaning fluid.
11. Allow parts to dry.
12. Put 3 small drops of oil in handpiece in places marked **A** and **B** below— where the ball bearings are visible. Also, put a drop of oil into collet end of Spindle marked **C**, and above and below Tension Adjustment Sleeve in areas marked **D**.
13. Put 2 drops of oil on Collet and insert into handpiece, long end first.
14. Screw on Chuck Nut using wrench and pair of pliers.
15. **Important!** Put Dust Shield on Chuck Nut with cup-shaped side down toward Chuck Nut.
16. Screw on Nosepiece.
17. For **H.10D Duplex Spring Handpiece Only**, put light film of flexible shaft grease on Duplex Spring and 1 drop of oil on Duplex Axle.
18. Replace Rear Housing (and Washer, Snap Ring and Slotted Shaft Connector if **H.10D Duplex Spring Handpiece**).
19. Put a drop of oil on cam of Lever Assembly.
20. Screw lever assembly back into Rear Housing using 5/16" wrench while holding lever in the closed or locked position.
21. Tighten all parts and handpiece will be ready for use.